



# C2R2MAX

## SETUP SHEET

Event	Car	R2 MAX	<b>TARMAC BASE SETUP</b>
Date	Surface	Tarmac	
Crew	Weather Conditions	Dry	

### General Specifications

Dimensions	Rims	6,5 x 16		Target Warm (*)				
	Tyres	Pirelli	200/600-16	Setup Pressure	bars 2	F : 2,4 bars R : 2,2 bars		
	(*) : The target means a tyre pressure just at the end of a 15kms long special stage.							
	Weight balance per wheel (with 20L => 15kg)	kg	FrL		FrR	Ballast detail	Weight on front	%
Crew weight	kg	Driver		Navigator		Delta L/R	Kg	
Total weight	kg			1180 min	Balast	Kg		
Total weight without crew	kg			1030 min				

### Front Axle Specifications

Suspension	Main spring	daN/mm	5,5					
	Intermediate spring	daN/mm	0,4					
	Shock absorber	spec	ABO-RA-070097	Pression	bars 12	Clics Base. (c / C / D)	-11 / -15 / -12	
	Shock setting		BHY Base / Start	-15	-15	Clics Start	-13 / -12 / -15	
	Anti roll bar	mm	ø 21 pleine					
Anti roll bar link length	mm	Left	nominal : 285 mm					Right
Wheel spacer	mm	Left	Non					Right

Geometry	Ride height (A)	mm	Left	230mm, subframe bolt					Right
	Distance between spring cup	mm	Left	1 rev => 1,5 mm ride height					Right
	Réf. aux ailes avec équipage	mm	Left	Appui compensateur/ face inf. fourreau					Right
	Toe "in"	mm	Left	0 mm total, toe in on brakes					Right
	Camber	°/°	Left	2°10'					Right
	Steering joint ball length	mm	Left	1 rev => 4,8 mm at the wheel					Right
	Caster	°/°	Left						Right
	Pince ficelle	mm	Left	sans point milieu					Right
				avec point milieu					

### Rear Axle Specifications

Suspension	Main Spring	daN/mm	4,1					
	Intermediate spring	daN/mm	0,5	S1600 spec				
	Shock absorber	spec	ABO-RA-070079	Pressure	bars 12	Clics base (c / C / D)	-15 / -15 / -15	
	Shock setting		BHY Base / Start	-1,5	-2	Clics	-18 / -12 / -12	
	Rear axle crossmember	mm	5/26 full					
Wheel spacer	mm	Left	No					Right

Geometry	Ride height (B)	mm	Left	350mm on rear body cross member					Right
	Spring cup measurement (D)	mm	Left	1 rev => 2 mm ride height					Right
	Réf. aux ailes avec équipage	mm	Left						Right
	Toe-in requested	mm	Left	5 mm "in" Total					Right
	Toe in	°/°	Left	"- " means less toe in					Right
	Toe in shim	°/°	Left	1°40'					Right
	Camber	°/°	Left	"- " means less camber					Right
Camber shim	mm	Left						Right	

### Brake Specifications

Brake	Caliper (Piston Ø / nb)	mm	Left	44 / 40	4 pistons	31,8	2 pistons	Rear
	Diameter / Thickness (bd new)	mm	Left	302 / 26		280 / 8		Rear
	Pads (Mark / model)	spec	Left	Pagid / RS 15		FERODO DS3000		Rear
	Master cylinder (Ø)	inch	Principal	22 mm	Without servo		0.700"	HB
	Rear brake pressure limiter	spec		Bendix	Cutting	bars		

### Steering Specifications

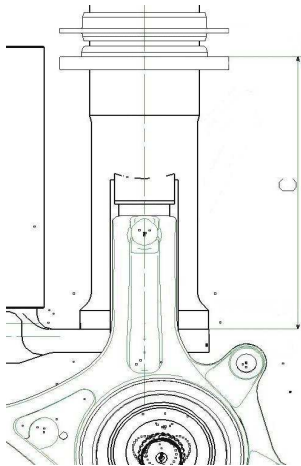
Steering	Steering rack	spec	BCSP4000ZN, CITROEN Racing shop						
	Steering rack height setting	mm	Left						Right
	Power steering pump	spec	BCSP4007ZX CITROEN Racing shop					Ø Caliber	Following driver

### Gearbox Specifications

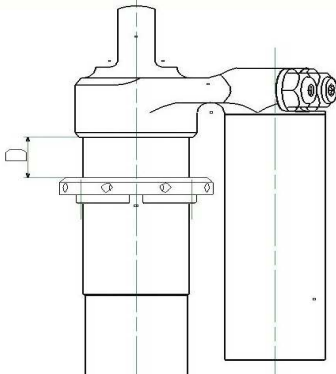
GBox	Gears	12 x 36	16 x 34	17 x 28	20 x 27	21 x 24	
	Final ratio (speed in accordance)	13x54 (long, 195km/h)	12x53 (medium, 183km/h)	12x57 (short, 171km/h)			
	Differential	Accel	30	Deccel	90	Preload	9 m.daN



Hauteur sous coupelle AV

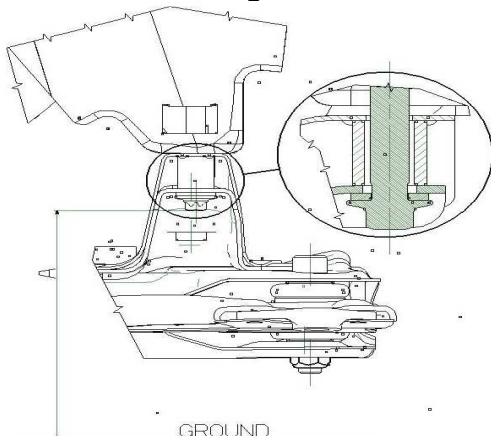


Hauteur sous coupelle AR



**IMPORTANT : By the "R" rules, the F.I.A limits the low ride height. Please, check the page 1 and 2 of the 28/02 VR2B sheet to know the measurement values, and how / where measuring it.**

Front ride height measurement



Rear ride height measurement

